

State of Wyoming Corner Record

(In compliance with the CORNER PERPETUATION AND FILING ACT, Wyoming Statutes, 1977, Section 36-11-101, et. seq., and the Rules and Regulations of the Board of Registration for Professional Engineers and Professional Land Surveyors)

The Reverse side of this form may be used if more space is needed.

The record of the original survey and the citation of the source of historical information (if the corner is lost or obliterated) The description of the corner monumentation evidence as found and/or monument and accessories established to perpetuate the location of this corner. A sketch of the relative location of the monument, accessories, and reference points with course and distances to the adjacent corner(s) (if determined in this survey). The method and rationale for reestablishment of the lost or obliterated corner.

G.L.O.: NOT SET DURING ORIGINAL SURVEY.

Set 5/8" X 36" rebar with a 3-1/4" Aluminum Cap on a Bearing~ Bearing intersection on the line running from 1/4 of Sec.4/8 & 1/4 Sec.4/33 and the line running from 1/4 Sec. 5/4 & 1/4 Sec.3/4.

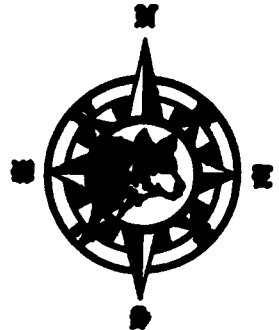
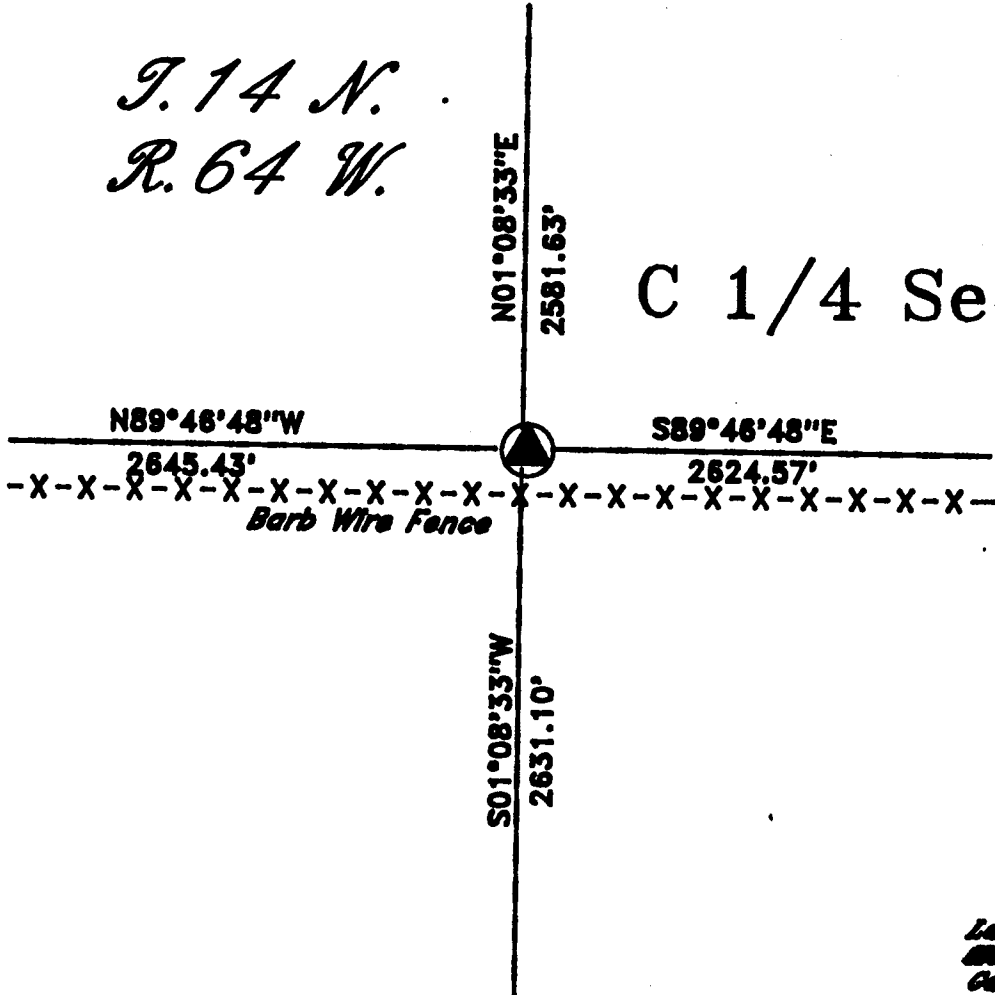
LARAMIE COUNTY CLERK
CHEYENNE, WY.

2109333

SEP 29 PM 12 02
SEP 29 1997

T. 14 N.
R. 64 W.

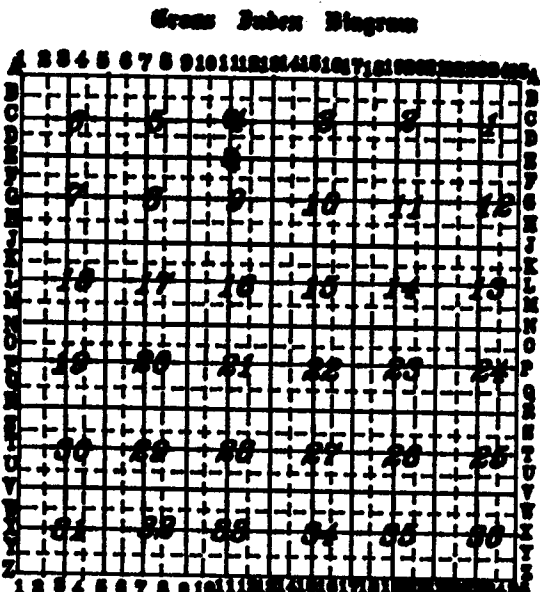
C 1/4 Section 4



Larry T. Perry L.S.
Gary N. Grigby RIT

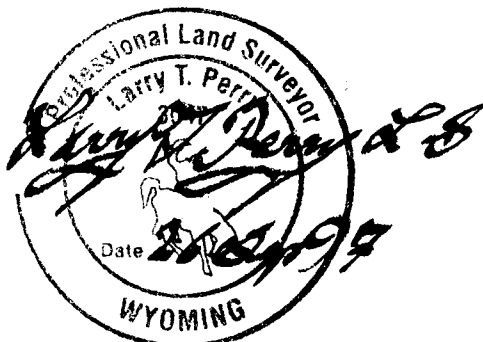
Date of Field Work: _____

Office Reference: _____



Attest
Terrestrial Surveying & Mapping Co.
1187 Perry Ranch Road Cheyenne, Wyoming 82007
Phone: (307) 634-0000
This corner record was prepared by me or under my direct supervision.

Seal and Signature



Corner Name: C - 1/4 Section: 4 T. 14 N. R. 64 W. P.M. Cross Index No. C - 11